

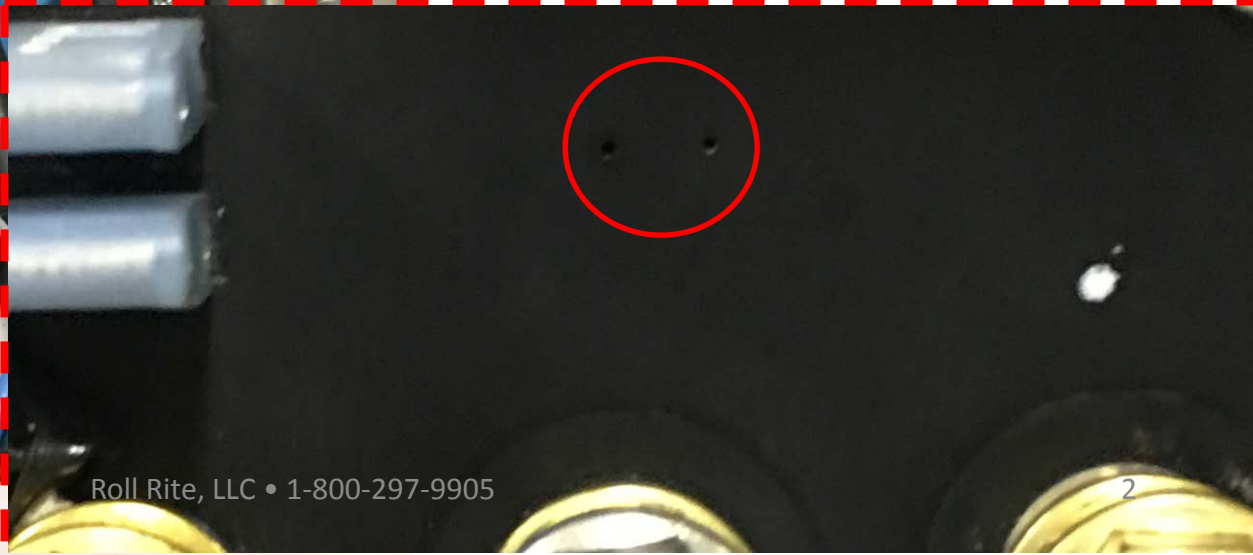
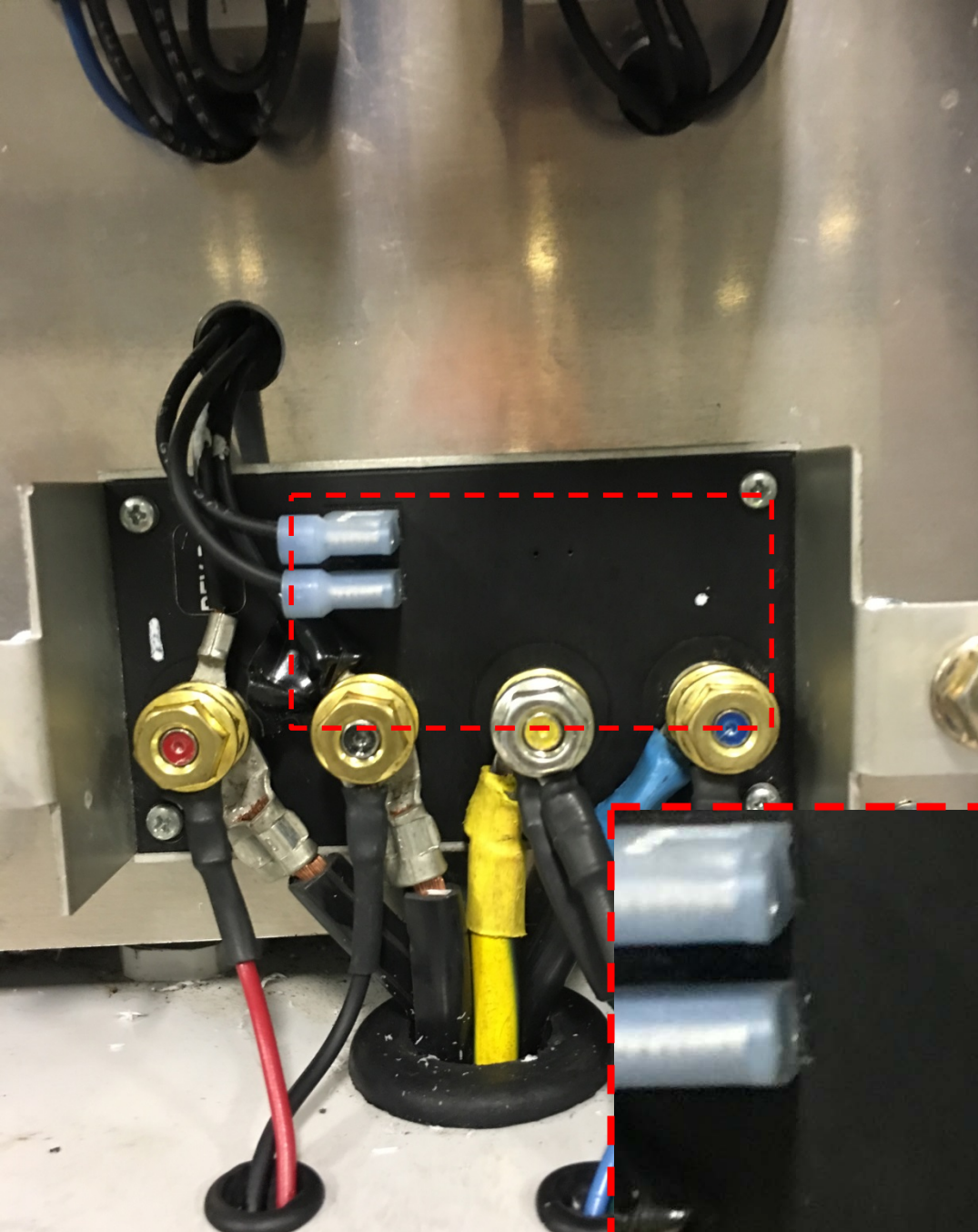


**Automated Covering Systems**

# Relay Flash Codes

InPower Gen1 and Gen1+  
Relay Flash Code Visual Aid

**LED View Access Through Back Side of Solid State Motor Controller**





**LED View Access at Front of Solid State Relay**



## FLASH CODE TABLE

LED Activity	Status of System	LED Activity Duration
Off	Ready to Run	While at rest
Solid On	Motor is running normally	While running
2 Flashes	Programmed stall current achieved	Repeats twice then resets
3 Flashes	Module over current protection	Repeats for 10 seconds then resets
4 Flashes	Module overheat protection	Repeats for 10 seconds then resets
5 Flashes	Over Voltage ( > 15.5v)	Will repeat continuously until voltage drops below 15.5v then reset after 10 sec. During 10 sec reset unit will function
6 Flashes	Under Voltage ( < 7.5v)	Will repeat continuously until voltage is above 7.5v then reset after 10 sec. During 10 sec reset the unit will function
7 Flashes	Wiring Fault: Motor Circuit is Shorted	Will continue to repeat until fault is corrected the rest.

### NOTES:

- Flash codes indicate both normal operation and faulted operation
- It is possible to have more than one flash code present after operation. When this occurs, write down the flash codes.
- Two Flash after system operation is normal. This indicates that the motor was shut off when the current limit that is programmed into the control module was observed
- Solid on is normal while the motor is operating